

Hampshire Water Transfer and Water Recycling Project Environmental Statement - Figure 8.47 Otter and water vole survey results

VOLUME NUMBER: 6

PLANNING INSPECTORATE SCHEME NUMBER: WA010002

APPLICATION DOCUMENT REFERENCE: 6.3

APFP REGULATION: 5(2)(a)

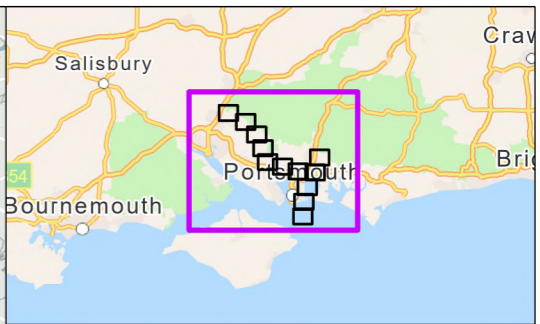
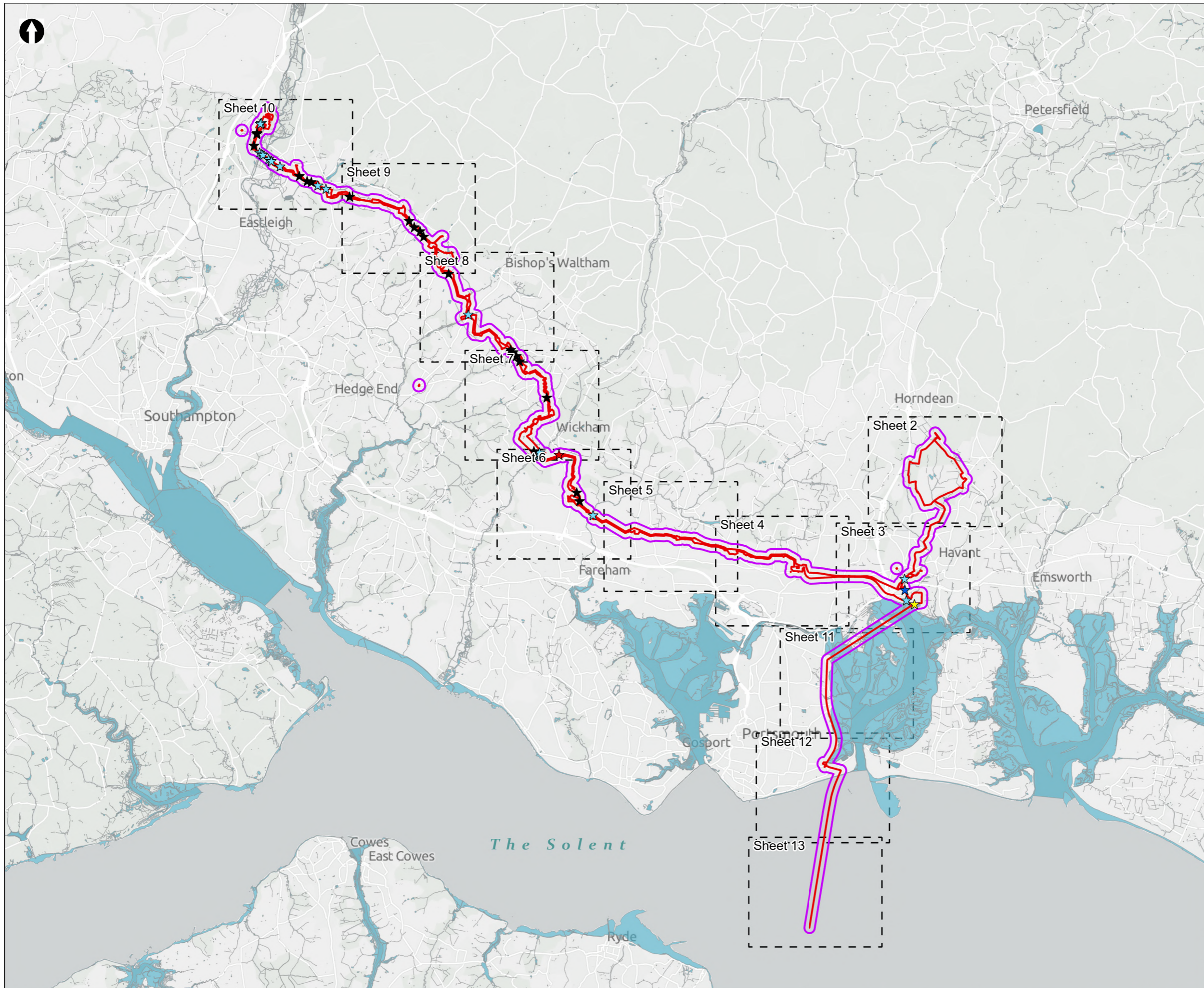
May 2026

Version 0



from
**Southern
Water** 

The Southern Water logo consists of three stylized, wavy blue lines of varying lengths, positioned to the right of the text 'Southern Water'.



- Order Limits
 - Otter and water vole field survey area
 - Sheet Extent Boxes 1:15K
 - Waterbodies and watercourses
- Watercourse Crossing**
- ★ Trenchless
 - ★ Open cut
 - ★ Construction compounds
 - ★ Construction accesses
 - ★ Other interface

Coordinate system: British National Grid; Datum: OSGB 1936
 Data sources: © Crown copyright and database rights 2026 Ordnance Survey 0100031673. Sources: Esri, TomTom, Garmin, FAO, NOAA, USGS, © OpenStreetMap contributors, and the GIS User Community, Contains OS data © Crown Copyright and database right 2026. Contains data from OS Zoomstack

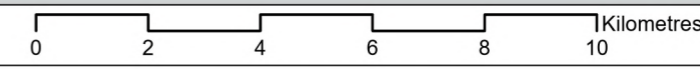
PROJECT TITLE
 Hampshire Water Transfer and Water Recycling Project

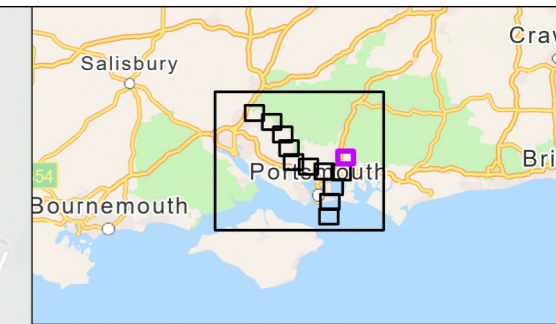
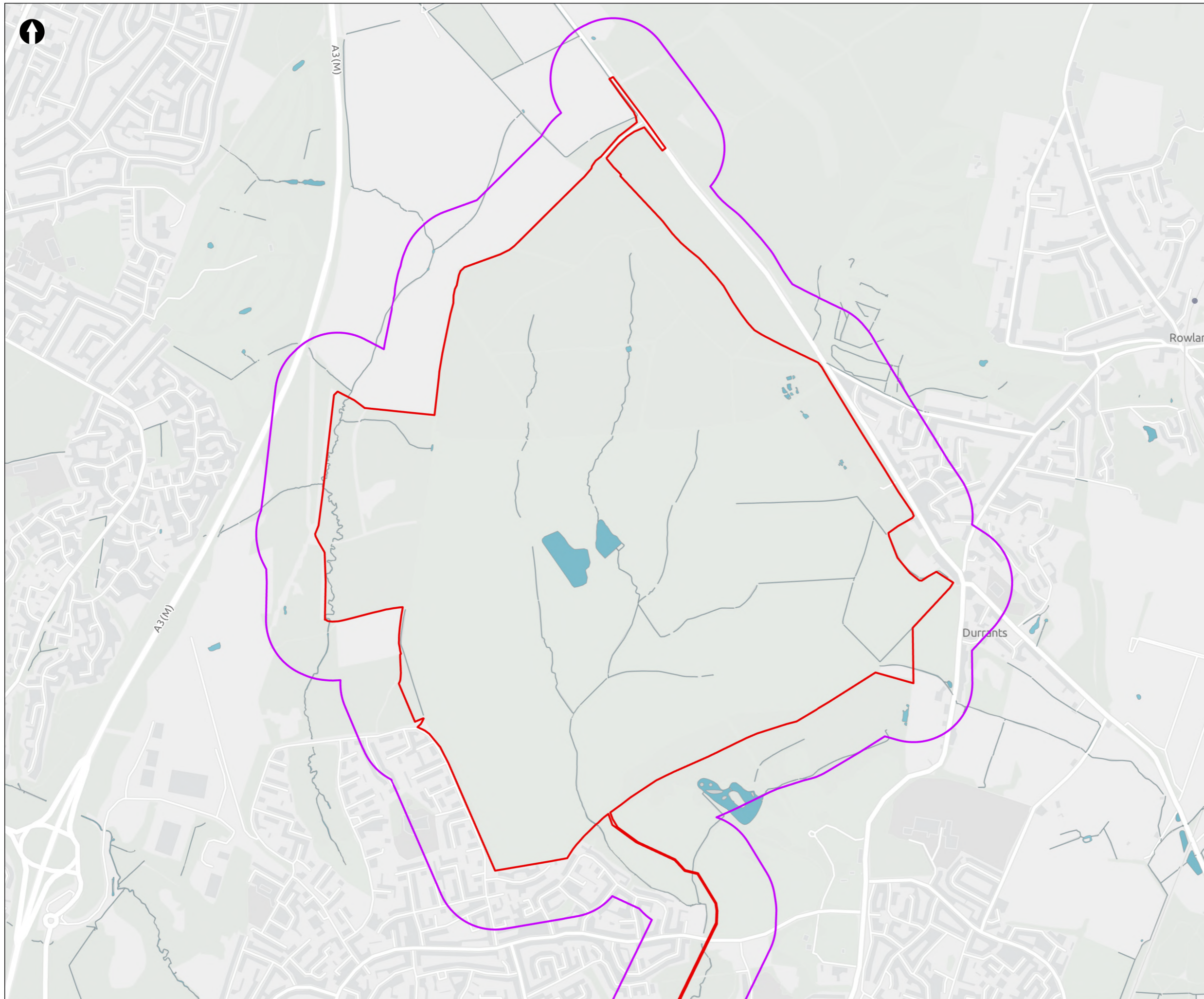


Figure 8.47
 Otter and water vole survey results
 Sheet 1 of 13

Drawn MW	GIS Checked DL	Checked MP	Approved AK
Scale at A3 1:135,000	Status Final	Revision 05	Security STD

Drawing Number
PC5223-RHD-ES-ZZ-D-Z-0071





- Order Limits
- Otter and water vole field survey area
- Sheet Extent Boxes 1:15K
- Waterbodies and watercourses

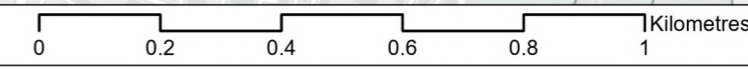
Coordinate system: British National Grid; Datum: OSGB 1936
 Data sources: © Crown copyright and database rights 2026 Ordnance Survey 0100031673. Sources: Esri, TomTom, Garmin, FAO, NOAA, USGS, © OpenStreetMap contributors, and the GIS User Community, Contains OS data © Crown Copyright and database right 2026. Contains data from OS Zoomstack

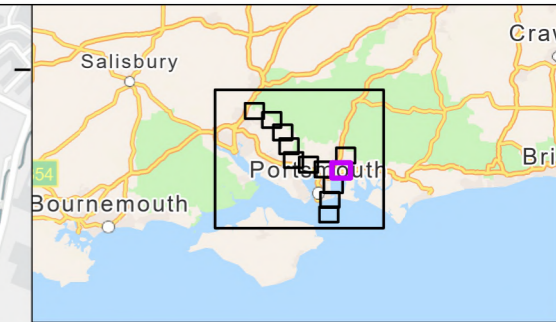
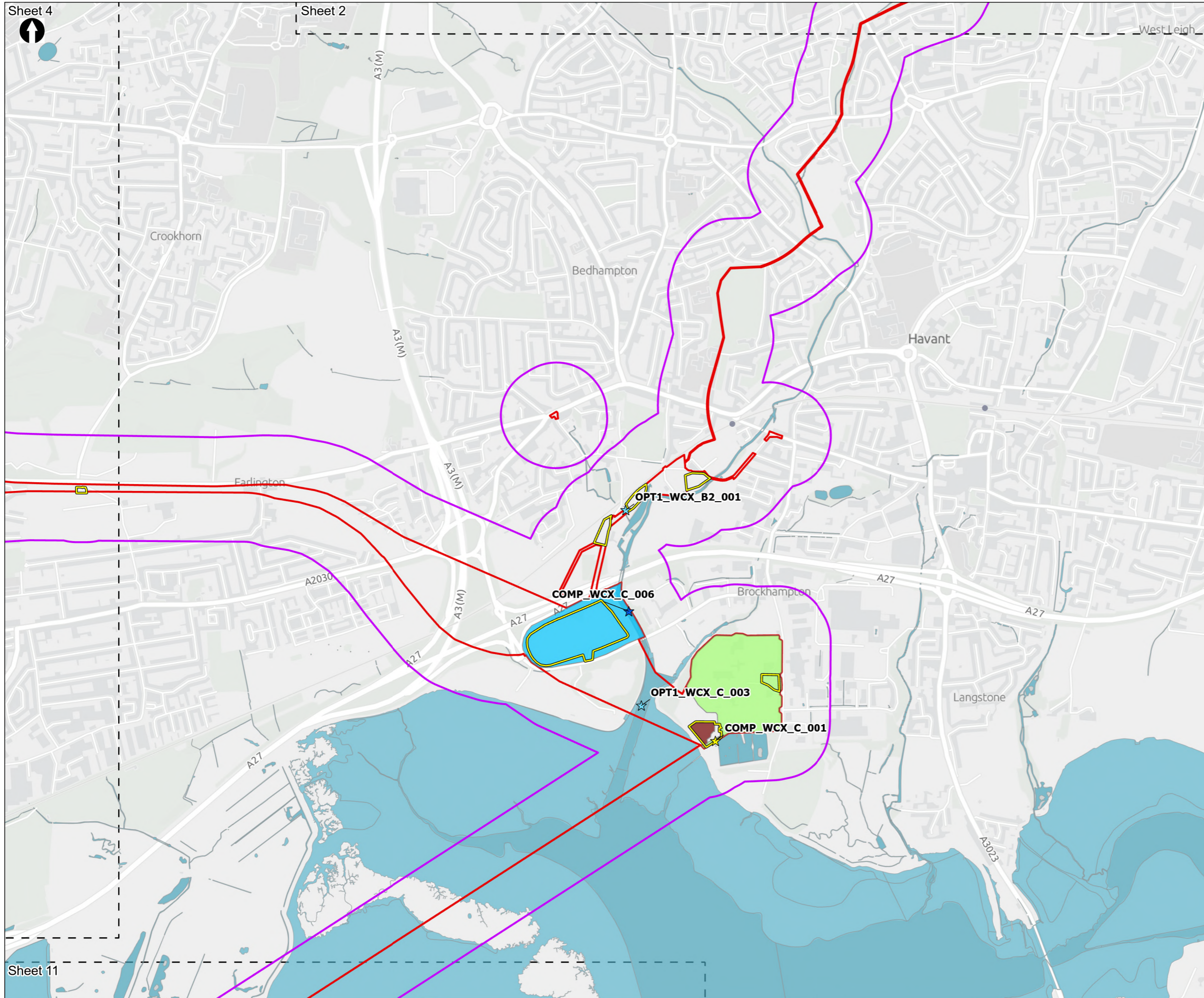
PROJECT TITLE
 Hampshire Water Transfer and Water Recycling Project



Figure 8.47
 Otter and water vole survey results
 Sheet 2 of 13

Drawn MW	GIS Checked DL	Checked MP	Approved AK
Scale at A3 1:12,500	Status Final	Revision 05	Security STD





- Order Limits
- Otter and water vole field survey area
- Sheet Extent Boxes 1:15K
- Construction compounds
- Waterbodies and watercourses
- Proposed Development components**
- Budds Farm Wastewater Treatment Works
- Limits of Deviation for Budds Farm Pumping Station
- Water Recycling Plant site
- Watercourse Crossing**
- ★ Trenchless
- ★ Construction compounds
- ★ Other interface

Coordinate system: British National Grid; Datum: OSGB 1936
 Data sources: © Crown copyright and database rights 2026 Ordnance Survey 0100031673. Sources: Esri, TomTom, Garmin, FAO, NOAA, USGS, © OpenStreetMap contributors, and the GIS User Community, Contains OS data © Crown Copyright and database right 2026. Contains data from OS Zoomstack

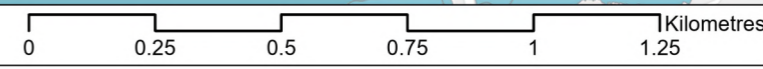
PROJECT TITLE
 Hampshire Water Transfer and Water Recycling Project

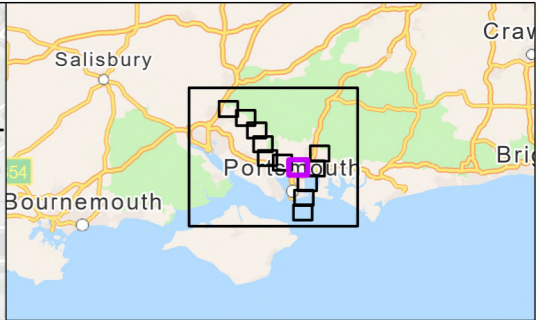
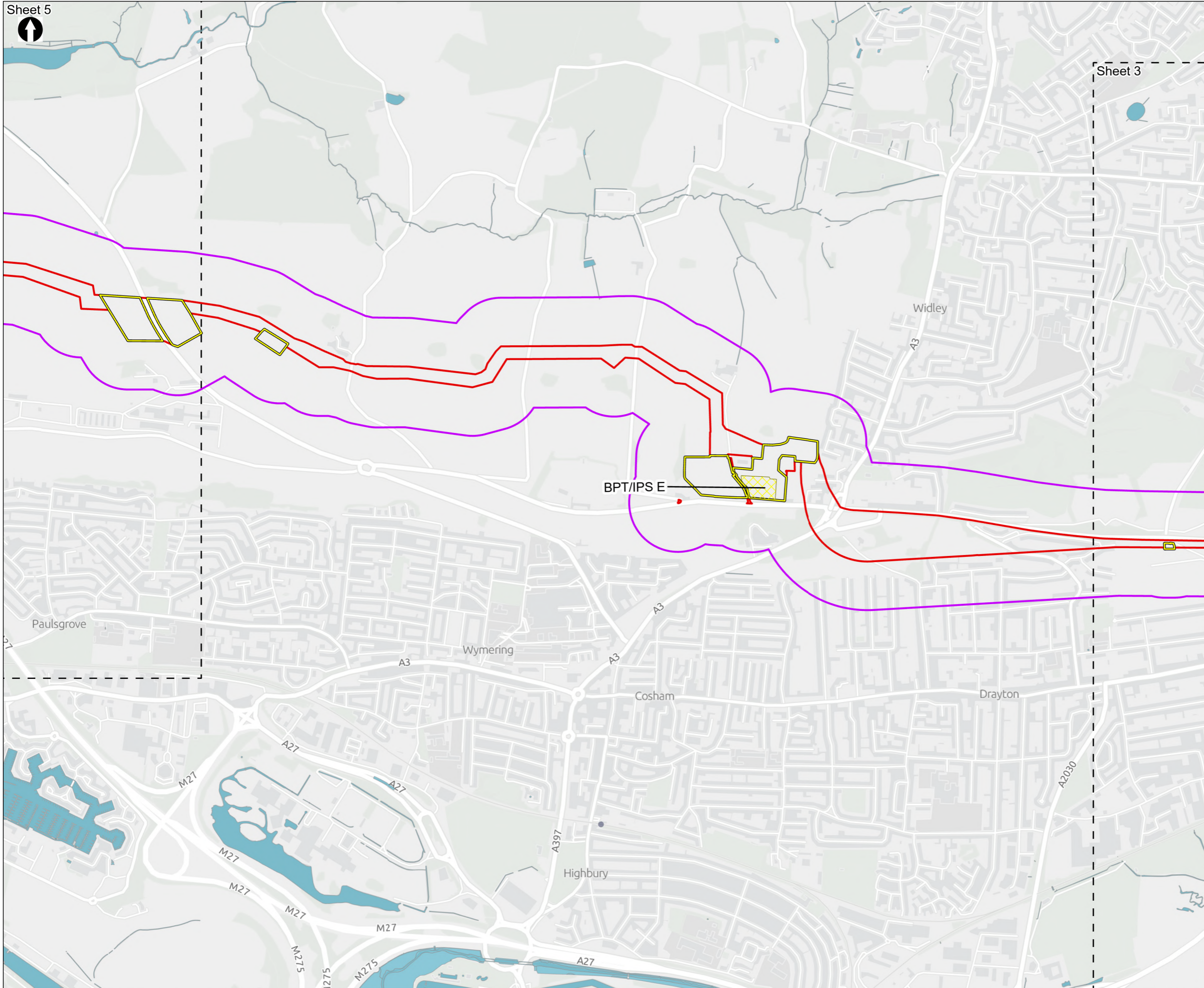


Figure 8.47
 Otter and water vole survey results
 Sheet 3 of 13

Drawn MW	GIS Checked DL	Checked MP	Approved AK
Scale at A3 1:15,000	Status Final	Revision 05	Security STD

Drawing Number
PC5223-RHD-ES-ZZ-D-Z-0071





- Order Limits
 - Otter and water vole field survey area
 - Sheet Extent Boxes 1:15K
 - Construction compounds
 - Waterbodies and watercourses
- Above Ground Plant**
- Break Pressure Tank & Intermediate Pumping Station

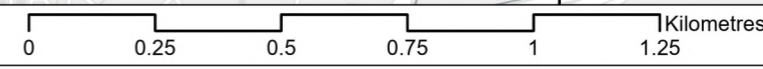
Coordinate system: British National Grid; Datum: OSGB 1936
 Data sources: © Crown copyright and database rights 2026 Ordnance Survey 0100031673. Sources: Esri, TomTom, Garmin, FAO, NOAA, USGS, © OpenStreetMap contributors, and the GIS User Community, Contains OS data © Crown Copyright and database right 2026. Contains data from OS Zoomstack

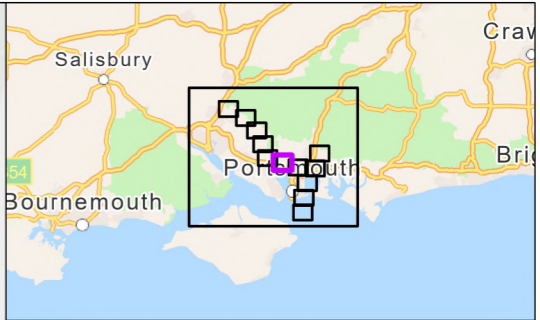
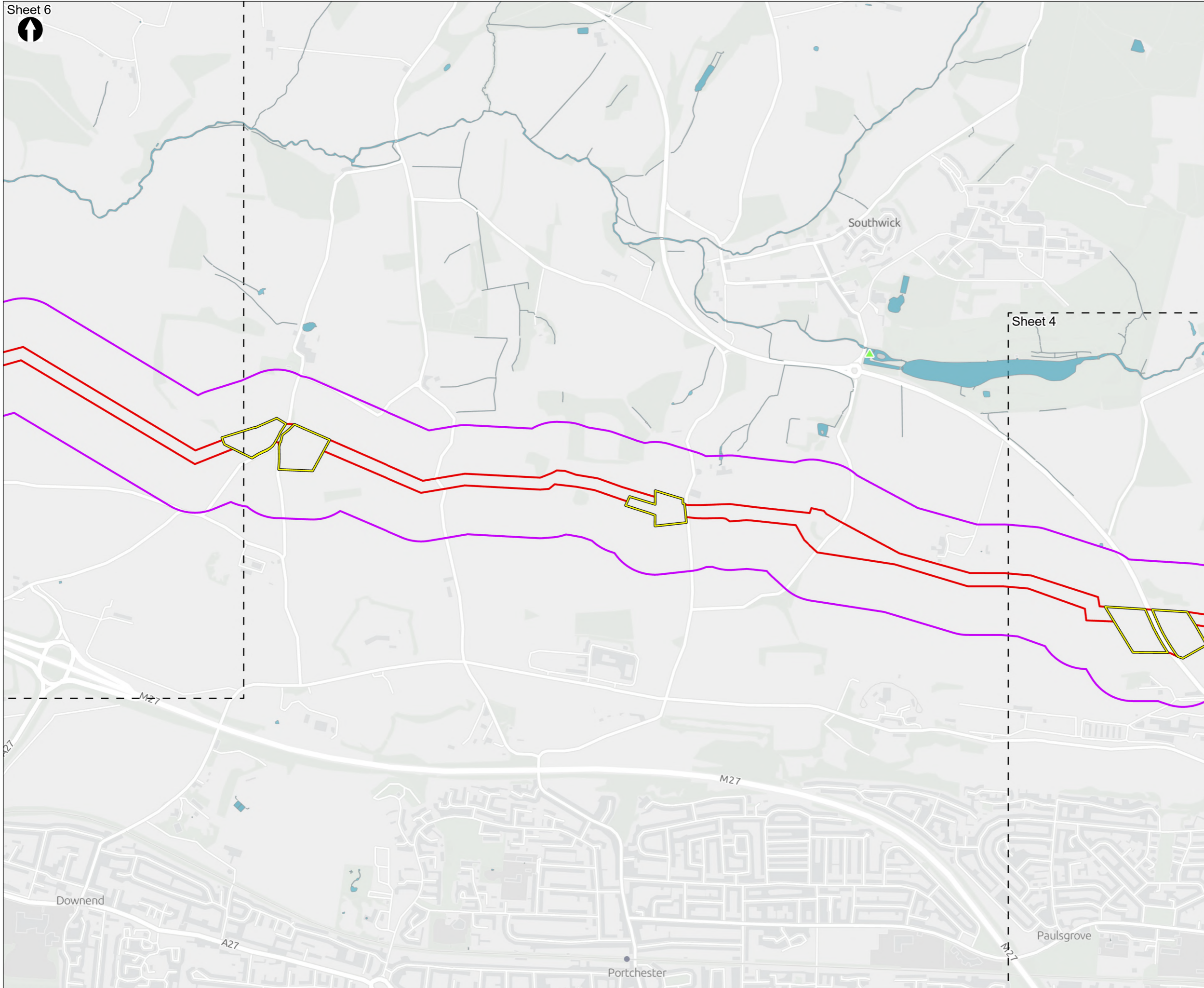
PROJECT TITLE
 Hampshire Water Transfer and Water Recycling Project



Figure 8.47
 Otter and water vole survey results
 Sheet 4 of 13

Drawn MW	GIS Checked DL	Checked MP	Approved AK
Scale at A3 1:15,000	Status Final	Revision 05	Security STD





- Order Limits
 - Otter and water vole field survey area
 - Sheet Extent Boxes 1:15K
 - Construction compounds
 - Waterbodies and watercourses
- Otter Field Signs**
- ▲ Spraint

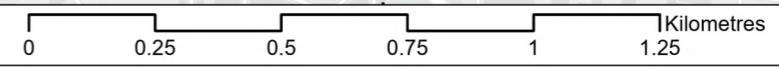
Coordinate system: British National Grid; Datum: OSGB 1936
 Data sources: © Crown copyright and database rights 2026 Ordnance Survey 0100031673. Sources: Esri, TomTom, Garmin, FAO, NOAA, USGS, © OpenStreetMap contributors, and the GIS User Community, Contains OS data © Crown Copyright and database right 2026. Contains data from OS Zoomstack

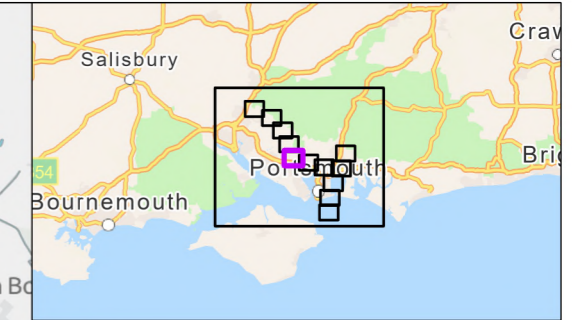
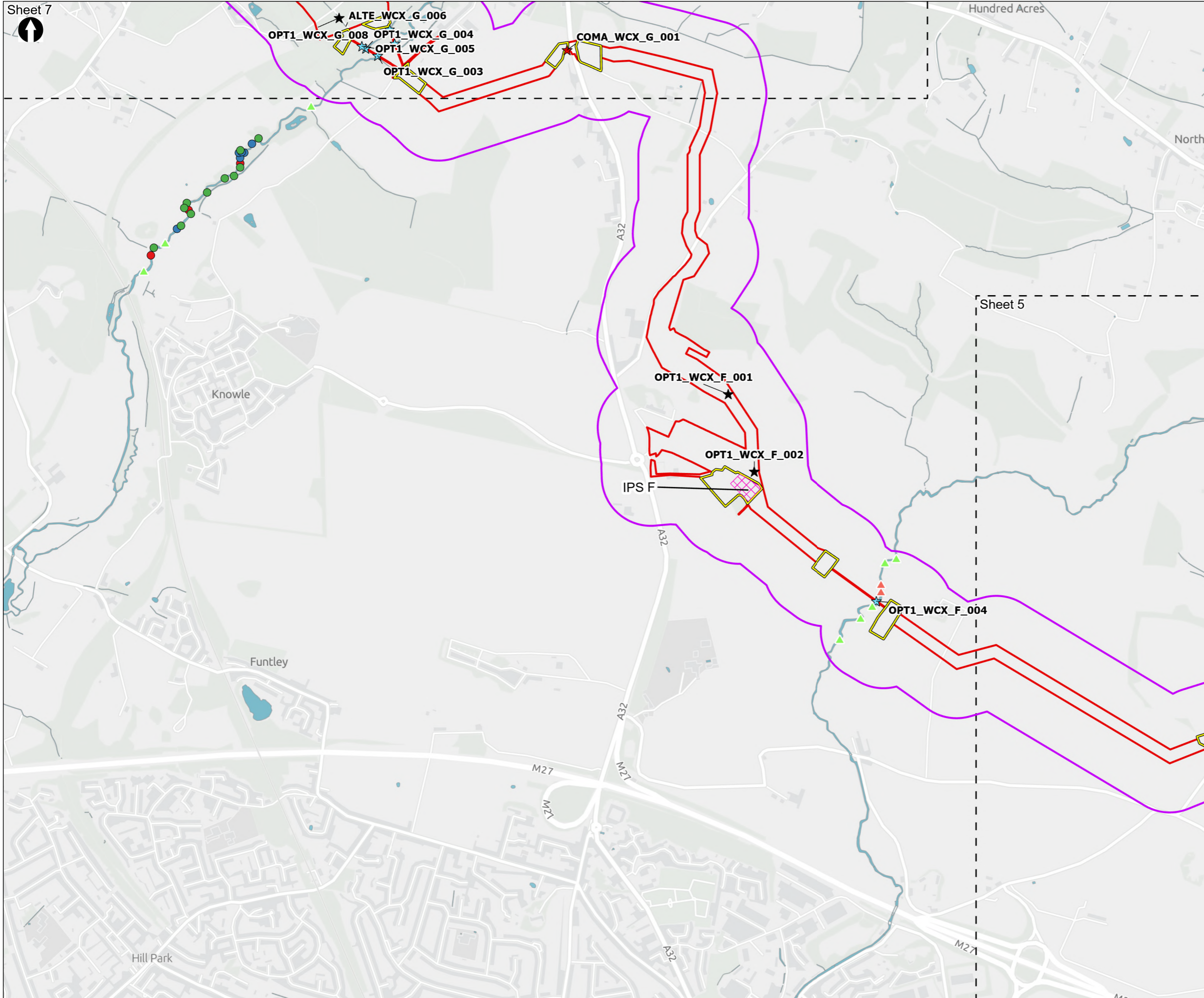
PROJECT TITLE
 Hampshire Water Transfer and Water Recycling Project



Figure 8.47
 Otter and water vole survey results
 Sheet 5 of 13

Drawn MW	GIS Checked DL	Checked MP	Approved AK
Scale at A3 1:15,000	Status Final	Revision 05	Security STD





- Order Limits
- Otter and water vole field survey area
- Sheet Extent Boxes 1:15K
- Construction compounds
- Waterbodies and watercourses
- Above Ground Plant**
- Intermediate Pumping Station
- Water Vole Field Signs**
- Burrow
- Droppings
- Feeding Remains
- Otter Field Signs**
- ▲ Resting Site
- ▲ Sprint
- Watercourse Crossing**
- ★ Trenchless
- ★ Open cut
- ★ Construction accesses

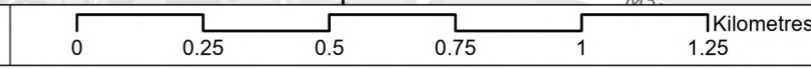
Coordinate system: British National Grid; Datum: OSGB 1936
 Data sources: © Crown copyright and database rights 2026 Ordnance Survey 0100031673. Sources: Esri, TomTom, Garmin, FAO, NOAA, USGS, © OpenStreetMap contributors, and the GIS User Community, Contains OS data © Crown Copyright and database right 2026. Contains data from OS Zoomstack

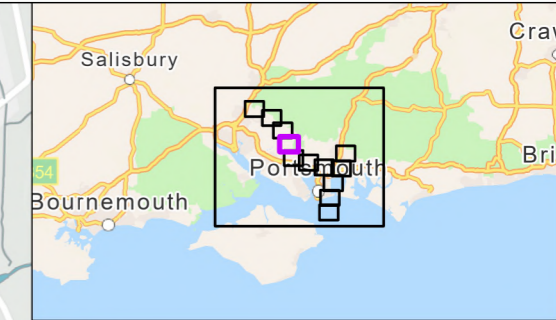
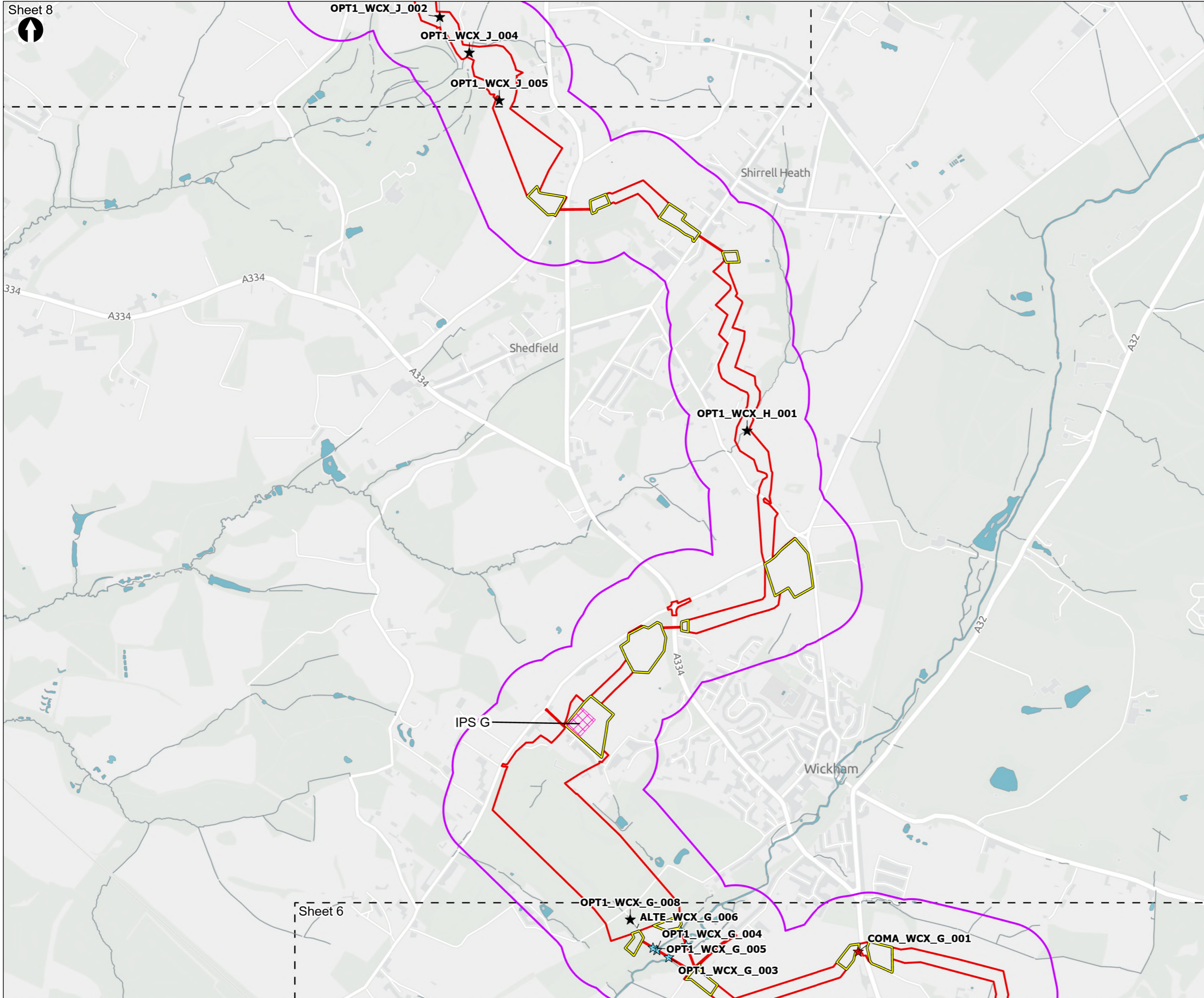
PROJECT TITLE
 Hampshire Water Transfer and Water Recycling Project



Figure 8.47
 Otter and water vole survey results
 Sheet 6 of 13

Drawn MW	GIS Checked DL	Checked MP	Approved AK
Scale at A3 1:15,000	Status Final	Revision 05	Security STD





Order Limits
— Order Limits
— Otter and water vole field survey area
 Sheet Extent Boxes 1:15K
 Construction compounds
 Waterbodies and watercourses

Above Ground Plant
 Intermediate Pumping Station

Watercourse Crossing
★ Trenchless
★ Open cut
★ Construction accesses

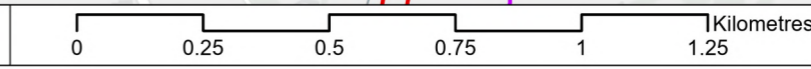
Coordinate system: British National Grid; Datum: OSGB 1936
 Data sources: © Crown copyright and database rights 2026 Ordnance Survey 0100031673. Sources: Esri, TomTom, Garmin, FAO, NOAA, USGS, © OpenStreetMap contributors, and the GIS User Community, Contains OS data © Crown Copyright and database right 2026. Contains data from OS Zoomstack

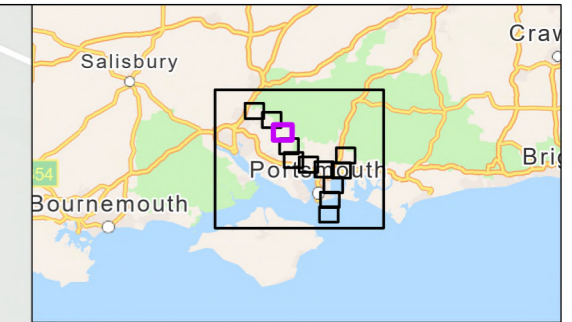
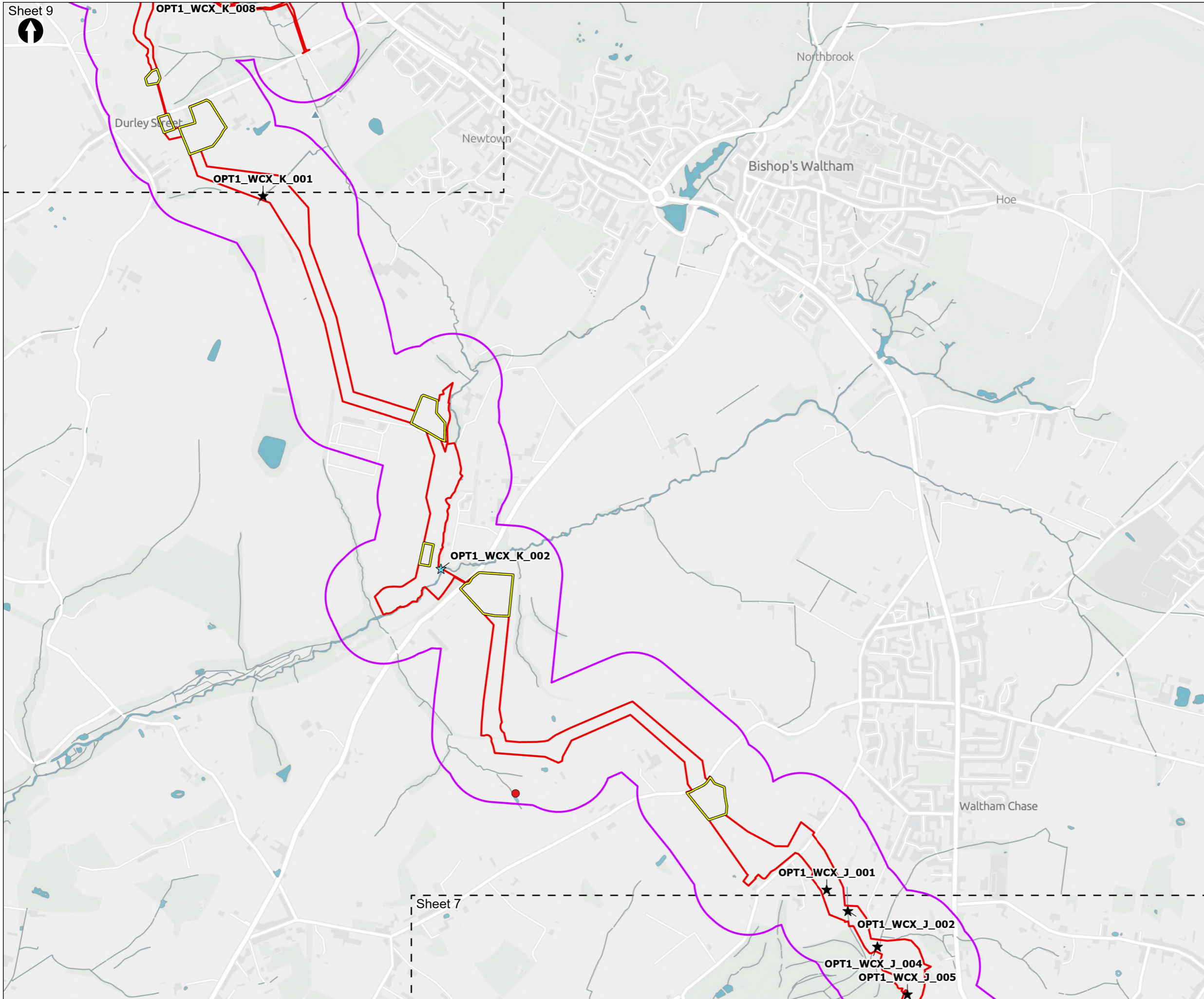
PROJECT TITLE
 Hampshire Water Transfer and Water Recycling Project



Figure 8.47
 Otter and water vole survey results
 Sheet 7 of 13

Drawn MW	GIS Checked DL	Checked MP	Approved AK
Scale at A3 1:15,000	Status Final	Revision 05	Security STD





- Order Limits
 - Otter and water vole field survey area
 - Sheet Extent Boxes 1:15K
 - Construction compounds
 - Waterbodies and watercourses
- Water Vole Field Signs**
- Burrow
- Otter Field Signs**
- ▲ Feeding Remains
- Watercourse Crossing**
- ★ Trenchless
 - ★ Open cut

Coordinate system: British National Grid; Datum: OSGB 1936
 Data sources: © Crown copyright and database rights 2026 Ordnance Survey 0100031673. Sources: Esri, TomTom, Garmin, FAO, NOAA, USGS, © OpenStreetMap contributors, and the GIS User Community, Contains OS data © Crown Copyright and database right 2026. Contains data from OS Zoomstack

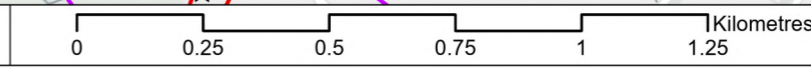
PROJECT TITLE
 Hampshire Water Transfer and Water Recycling Project

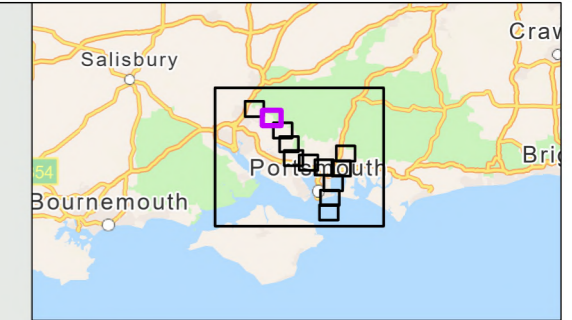
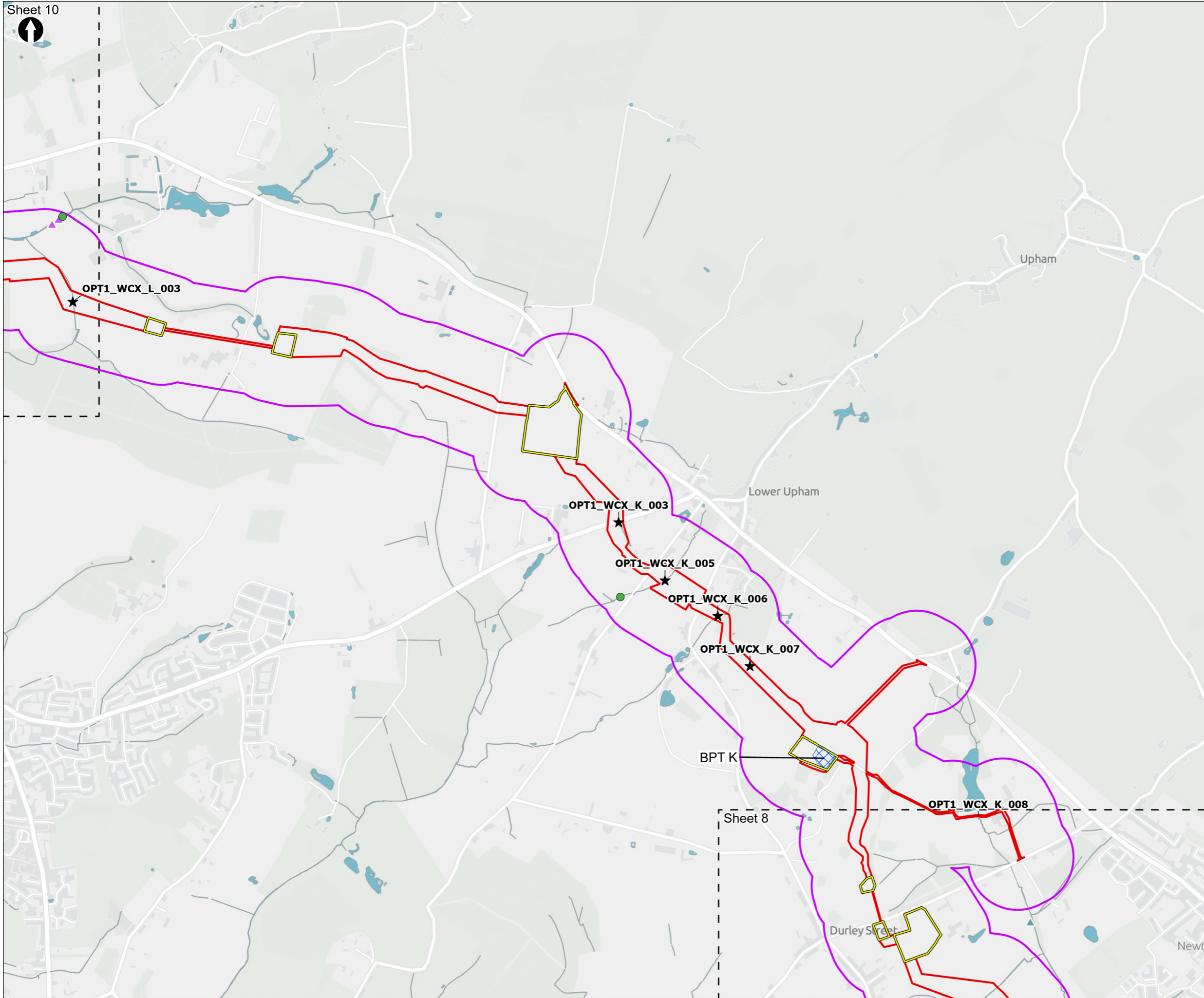


Figure 8.47
 Otter and water vole survey results
 Sheet 8 of 13

Drawn MW	GIS Checked DL	Checked MP	Approved AK
Scale at A3 1:15,000	Status Final	Revision 05	Security STD

Drawing Number
PC5223-RHD-ES-ZZ-D-Z-0071





- Order Limits
- Otter and water vole field survey area
- Sheet Extent Boxes 1:15K
- Construction compounds
- Waterbodies and watercourses
- Above Ground Plant**
- Break Pressure Tank
- Water Vole Field Signs**
- Feeding Remains
- Otter Field Signs**
- ▲ Feeding Remains
- ▲ Footprint
- Watercourse Crossing**
- ★ Open cut

Coordinate system: British National Grid; Datum: OSGB 1936
 Data sources: © Crown copyright and database rights 2026 Ordnance Survey 0100031673. Sources: Esri, TomTom, Garmin, FAO, NOAA, USGS, © OpenStreetMap contributors, and the GIS User Community, Contains OS data © Crown Copyright and database right 2026. Contains data from OS Zoomstack

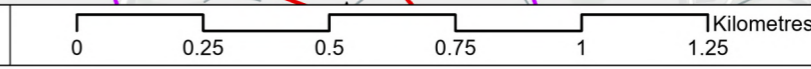
PROJECT TITLE
 Hampshire Water Transfer and Water Recycling Project

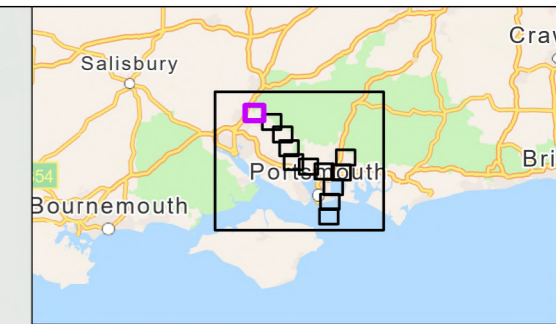
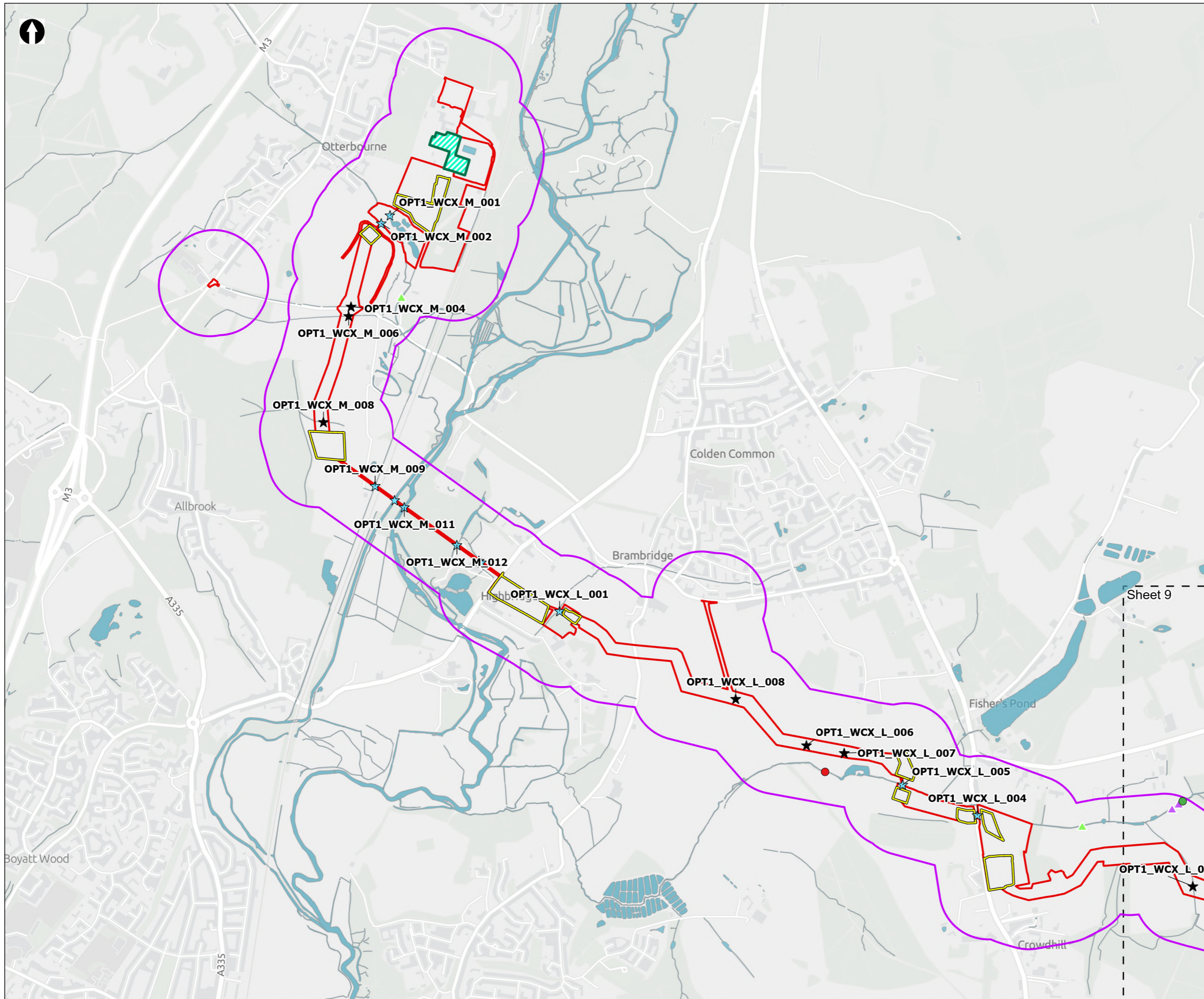


Figure 8.47
 Otter and water vole survey results
 Sheet 9 of 13

Drawn MW	GIS Checked DL	Checked MP	Approved AK
Scale at A3 1:15,000	Status Final	Revision 05	Security STD

Drawing Number
PC5223-RHD-ES-ZZ-D-Z-0071





- Order Limits
- Otter and water vole field survey area
- Sheet Extent Boxes 1:15K
- Construction compounds
- Limits of Deviation for Otterbourne INNS Treatment Plant
- Waterbodies and watercourses
- Water Vole Field Signs**
- Burrow
- Feeding Remains
- Otter Field Signs**
- ▲ Footprint
- ▲ Spraint
- Watercourse Crossing**
- ★ Trenchless
- ★ Open cut

Coordinate system: British National Grid; Datum: OSGB 1936
 Data sources: © Crown copyright and database rights 2026 Ordnance Survey 0100031673. Sources: Esri, TomTom, Garmin, FAO, NOAA, USGS, © OpenStreetMap contributors, and the GIS User Community, Contains OS data © Crown Copyright and database right 2026. Contains data from OS Zoomstack

PROJECT TITLE
 Hampshire Water Transfer and Water Recycling Project

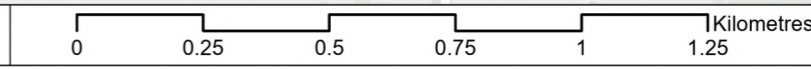


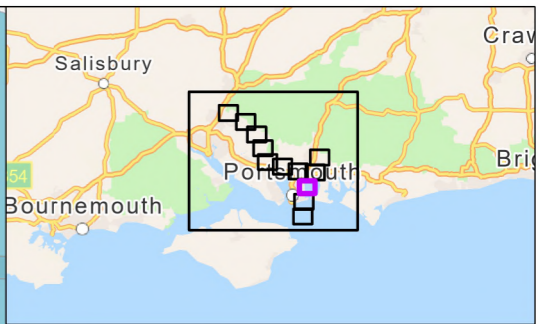
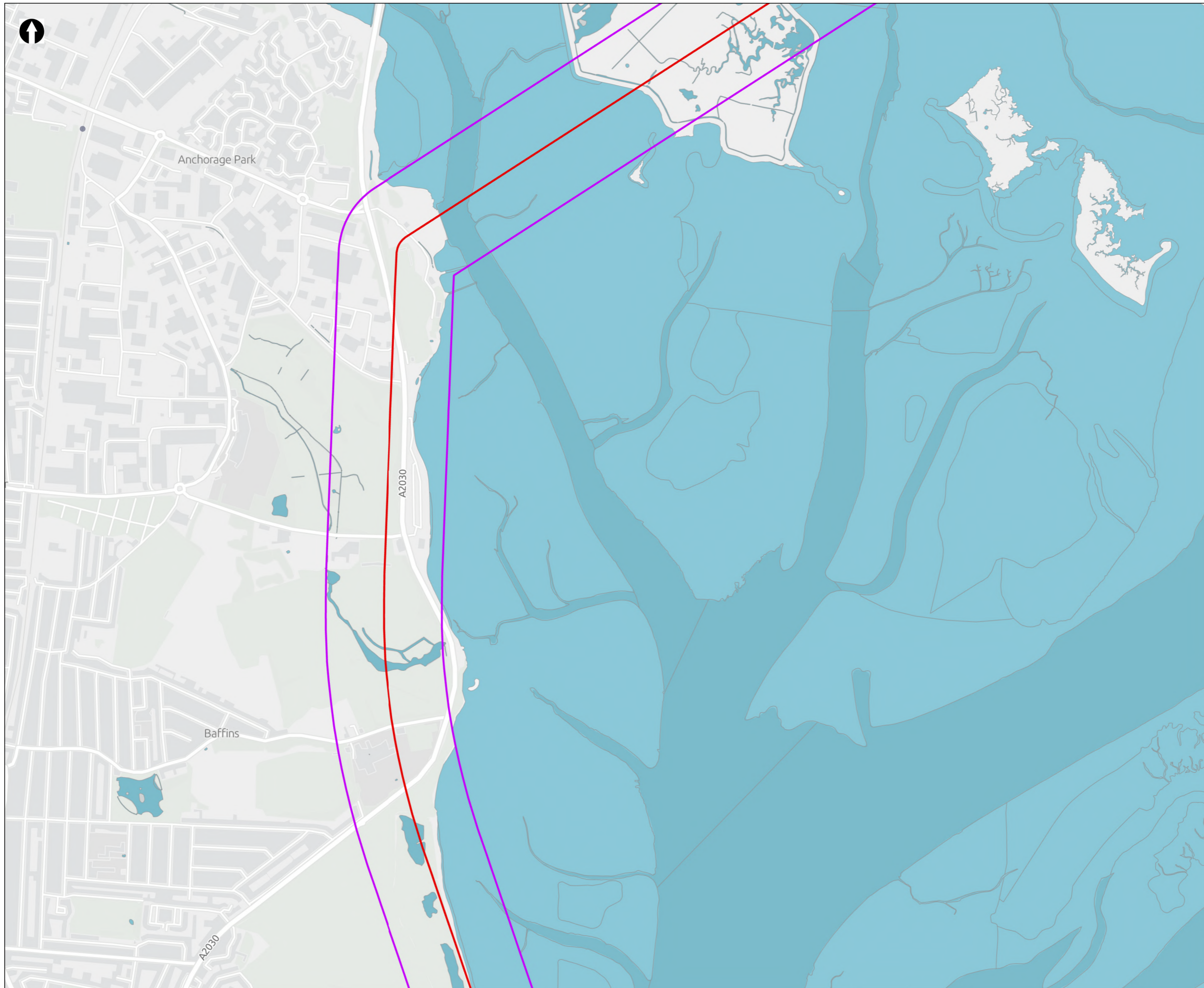
Figure 8.47
 Otter and water vole survey results
 Sheet 10 of 13

Drawn MW	GIS Checked DL	Checked MP	Approved AK
Scale at A3 1:15,000	Status Final	Revision 05	Security STD

Drawing Number
PC5223-RHD-ES-ZZ-D-Z-0071

© Southern Water 2026
 This document is issued for the party which commissioned it and for specific purposes connected with the captioned project only. It should not be relied upon by any other party or used for any other purpose. We accept no responsibility for the consequences of this document being relied upon by any other party, or being used for any other purpose, or containing any error or omission which is due to an error or omission in data supplied to us by other parties.





- Order Limits
- Otter and water vole field survey area
- Sheet Extent Boxes 1:15K
- Waterbodies and watercourses

Coordinate system: British National Grid; Datum: OSGB 1936
 Data sources: © Crown copyright and database rights 2026 Ordnance Survey 0100031673. Sources: Esri, TomTom, Garmin, FAO, NOAA, USGS, © OpenStreetMap contributors, and the GIS User Community, Contains OS data © Crown Copyright and database right 2026. Contains data from OS Zoomstack

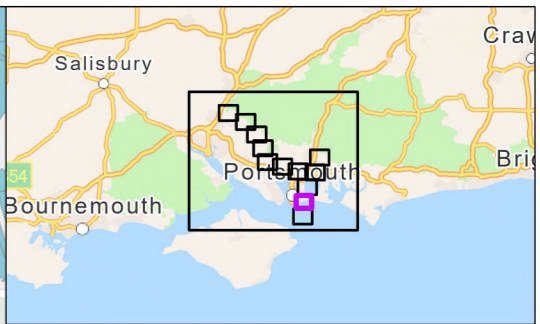
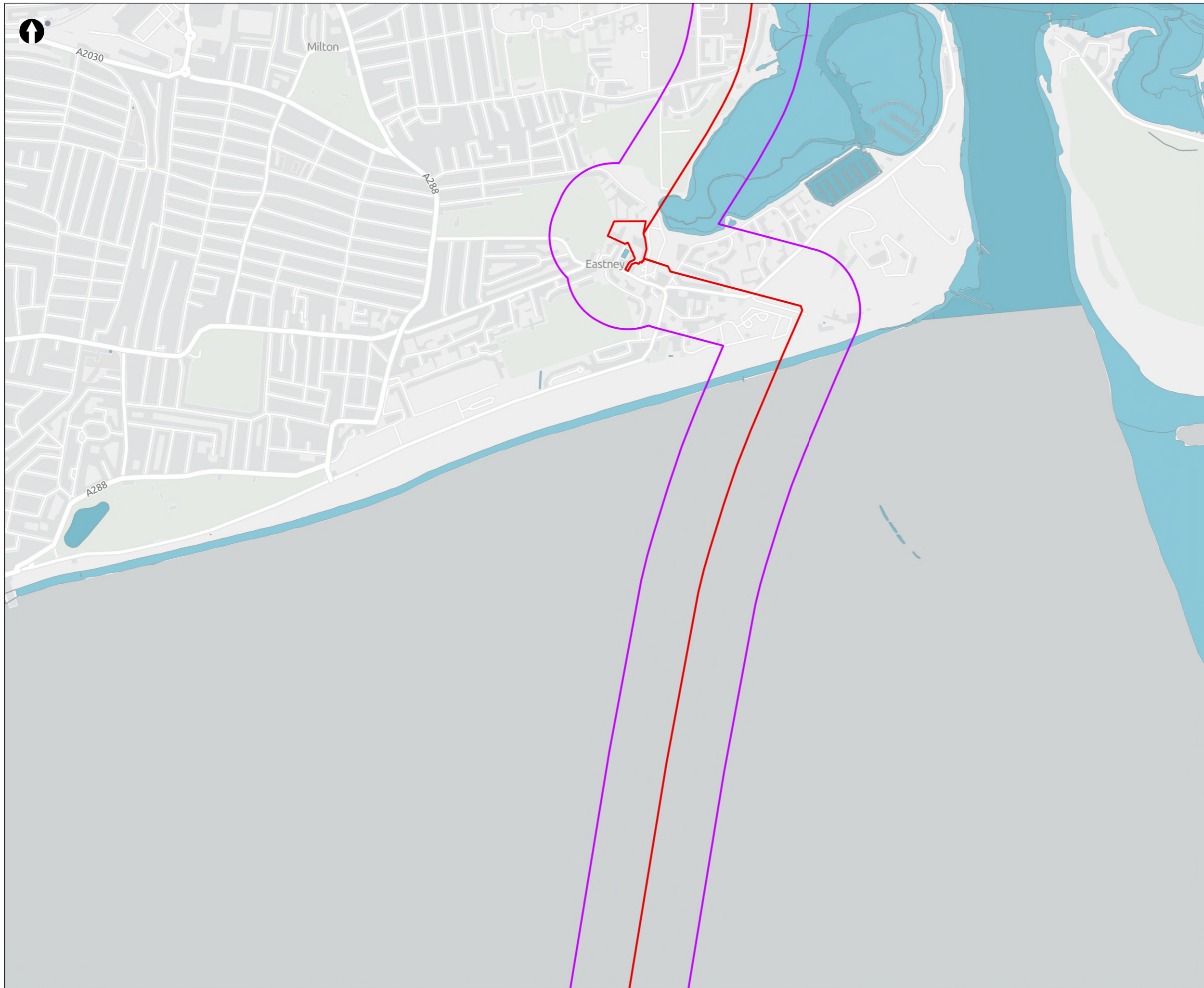
PROJECT TITLE
 Hampshire Water Transfer and Water Recycling Project



Figure 8.47
 Otter and water vole survey results
 Sheet 11 of 13

Drawn MW	GIS Checked DL	Checked MP	Approved AK
Scale at A3 1:12,500	Status Final	Revision 05	Security STD





- ▭ Order Limits
- ▭ Otter and water vole field survey area
- Sheet Extent Boxes 1:15K
- Waterbodies and watercourses

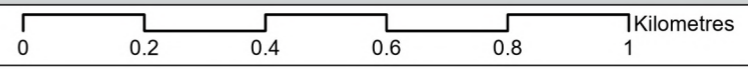
Coordinate system: British National Grid; Datum: OSGB 1936
 Data sources: © Crown copyright and database rights 2026 Ordnance Survey 0100031673. Sources: Esri, TomTom, Garmin, FAO, NOAA, USGS, © OpenStreetMap contributors, and the GIS User Community, Contains OS data © Crown Copyright and database right 2026. Contains data from OS Zoomstack

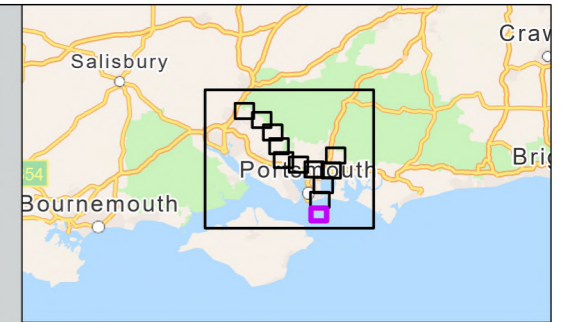
PROJECT TITLE
 Hampshire Water Transfer and Water Recycling Project



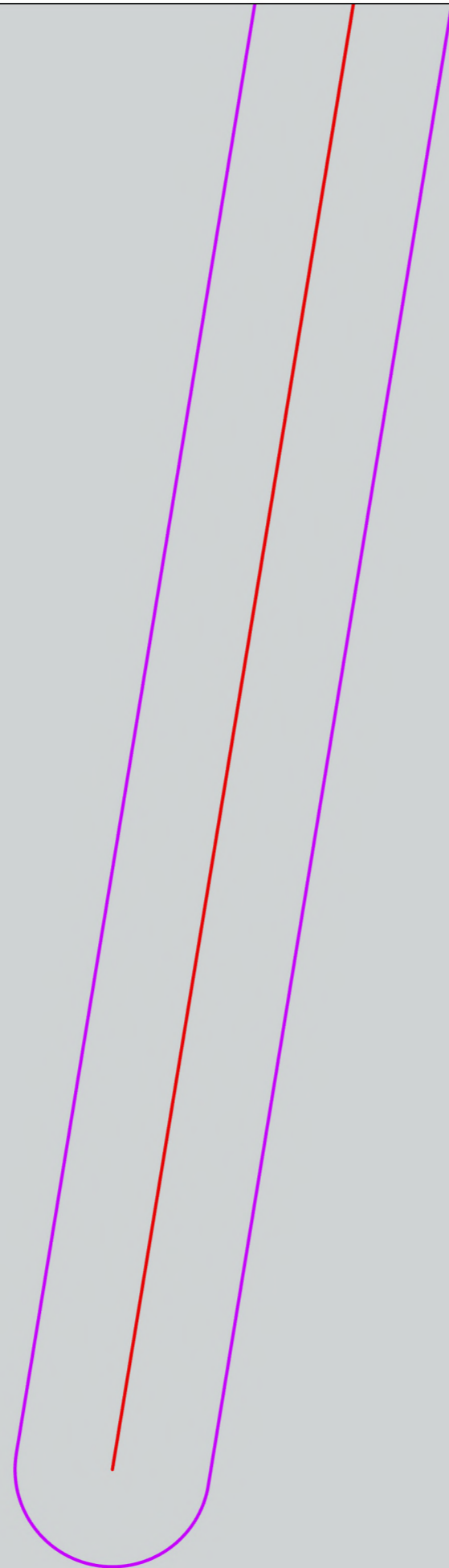
Figure 8.47
 Otter and water vole survey results
 Sheet 12 of 13

Drawn MW	GIS Checked DL	Checked MP	Approved AK
Scale at A3 1:12,500	Status Final	Revision 05	Security STD





- Order Limits
- Otter and water vole field survey area
- Sheet Extent Boxes 1:15K



Coordinate system: British National Grid; Datum: OSGB 1936
 Data sources: © Crown copyright and database rights 2026 Ordnance Survey 0100031673. Sources: Esri, TomTom, Garmin, FAO, NOAA, USGS, © OpenStreetMap contributors, and the GIS User Community, Contains OS data © Crown Copyright and database right 2026. Contains data from OS Zoomstack

PROJECT TITLE
 Hampshire Water Transfer and Water Recycling Project



Figure 8.47
 Otter and water vole survey results
 Sheet 13 of 13

Drawn MW	GIS Checked DL	Checked MP	Approved AK
Scale at A3 1:12,500	Status Final	Revision 05	Security STD

